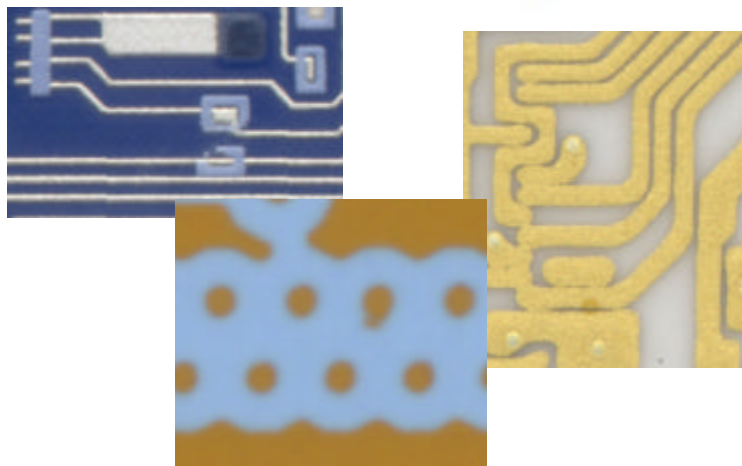


ScanEYE PASTE™

"Automatic Print Inspection"



WHAT IS ScanEYE PASTE?

ScanEYE PASTE provides a simple and user-friendly alternative to inaccurate and time-consuming manual inspection methods or high cost automated machines.

ScanEYE PASTE uses a simple Windows user interface integrated with an automated table and image-processing unit. This combination allows 100% inspection of printed conductor, resistor, or dielectric materials on substrate.

HOW DOES ScanEYE PASTE WORK?

ScanEYE PASTE's integration within the production process provides 100% verification of print images before moving to the next process.

Each substrate is placed directly from the assembly line and into ScanEYE PASTE for 100% inspection. The substrate is then accepted or rejected. No more surprises!

INPUT DATA VERSATILITY

ScanEYE PASTE adds flexibility to your inspection process. ScanEYE PASTE utilizes CAD data and/or golden printed substrates to verify print areas.

INCREASED YIELD & IMPROVED OVERALL EQUIPMENT EFFICIENCY

ScanEYE PASTE's powerful inspection process increases product yield by ensuring accurate printing. Missing or excess material can result in lost production time, extensive rework and product failure.

SIMPLICITY

ScanEYE PASTE set up is quick and easy. Each substrate is automatically aligned and checked for accuracy with a PASS or FAIL inspection in seconds.

WHY USE ScanEYE PASTE?

- Mandatory: 100% automatic inspection of substrate after printing.
- Security: Confirm print accuracy.
- Necessity: Detect errors before product failure.
- Flexibility: Inspect a wide variety of materials and substrates.

SYSTEM SPECIFICATIONS*

- Maximum Board Size: 18" X 24" (457mm X .610mm)
- Maximum Inspection Area: 16.5" X 22" (419mm X 559mm)
- Minimum Board Size: 1" X 1" (25.4mm X 25.4mm)
- Resolution: 400/1000/1200/1600/2000 dpi

Footprint of Inspection Unit

- Depth: 31.5" (800mm), table extended 49.5" (1,257mm)
- Width: 27.25" (692mm)
- Height: 19" (483mm)
- Weight: 150lbs. (55.95kg)

COMPUTER*

- Pentium III (1GHz) Personal Computer
- 60 GB HD, 1.0 GB RAM
- CD-ROM (CD-RW for archive purposes)
- Monitor (17" or larger)
- Printer
- Win 98SE//Me/2000/XP – Requires:
2 available USB ports

*Recommended customer supplied minimum PC requirements.



Partners: Avytechno Indonesia,
Techlogic Thailand, Westek Malaysia,
Tritronics Philippines, Utama Australia



AVI PRECISION ENGINEERING PTE LTD

1, KALLANG SECTOR #04-03, SINGAPORE 349276. TEL: 65 67483866 FAX: 65 67484810

Email: avipre@avipre.com.sg

Company Reg No: 199300584 M

Website: <http://www.avipre.com>

Skype: avipre